



WARD

Case Study: A decade of metal recycling and supporting the circular economy

In brief

Ward has been supporting metal fabrication company Goodman Metal Works Ltd with its metal recycling for over a decade. The two family-run businesses work in tandem; Ward recycles Goodman's metals and waste arisings and Goodman manufacturing parts for Ward's recycling equipment.



Made to be re-made

Family run business, Goodman Metal Works Ltd, supplies steel fabrication and stainless steel fabrication services to businesses throughout Europe. With over 50 years experience it specialises in large metal work fabrications up to and over 100 tonnes in sectors including construction, defence, mining, quarrying, recycling, renewable power and subsea and off-shore. It is about to embark on a major aluminium recycling plant in the USA and key project for the World Health Organisation, having completed the Angel Wings Sculpture at the entrance to the N1 shopping plaza in London.

Ward has been working with Goodman for over ten years, providing a range of skips

and metal waste recycling support. Waste management systems include eight yard skips to large roll on off containers for all different types of metal such as profile plate, turnings and light iron/steel.

Mutual benefits

This partnership approach has helped both businesses reduce waste, improve recycling and build a mutually beneficial cycle of products that are 'made to be made again'.

"We have built a strong relationship with Goodman's and the company is a great example of British manufacturing. Our work fits the circular economy model and is of great benefit to the environment."

Donald Ward,
Commercial Manager, Ward.com

WARD

ward.com | Registration Number: 1292288 Registered office: Moira Road, Woodville, Swadlincote, Derbyshire DE11 8DG

Case Study: A decade of metal recycling and supporting the circular economy

Vital statistics

Project:

Partnership metal processing

Client:

Goodman Metal Works

Sector(s):

Metal recycling, steel fabrication

Material(s):

Steel, stainless steel, aluminium

Location:

Derbyshire

Contract start date:

2008

Contract Completion Date:

Ongoing

Testimonial

"Ward has always been on hand to help with all kinds of recycling from our day to day pro-duction waste, waste segregation into various size bins or containers, to dealing with hazard-ous waste such as asbestos when we refurbished one of our factories.

On the other side of the partnership, we supply spare parts for their recycling processes. This has included designing and fitting a new trommel used for their segregation of waste at their waste processing sites."

- Richard Goodman, Owner, Goodman Metal Works Ltd

Further details

For more information, please contact:

Donald Ward

Commercial Manager at Ward

donald@ward.com

+44 (0) 7812 998210

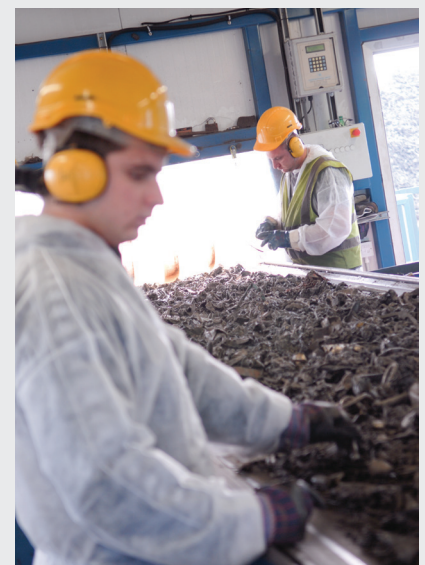
In photos



Sorting and grading of metal arising



Movement and loading of metals for recycling



Hand sorting and segregations of metals following shredding